

# Oxygen Sparge Systems



H2O Engineering's oxygen sparge technology delivers a high concentration of oxygen gas directly to the contaminated subsurface. Oxygen is released in controlled time duration sequences via in-situ oxidation points. This feature can be programmed and recorded by the logic controller.

H2O Engineering's oxygen sparge units are completely self-contained and are available in trailer and cabinet enclosures. While we have designed our standard units to handle most field conditions, we also offer custom systems to meet extraordinary site demands. Our systems are successfully remediating petroleum hydrocarbons such as TPHg, TPHd, BTEX and MTBE in both groundwater and soil applications.



**O2SU20-190**

## Standard Features

- Featuring Intelo-zone® Control Technology
- PSA oxygen concentrator delivers 90% purity
- Variable oxygen delivery flow (1.0 – 2.0 CFM)
- Oxygen delivery pump
- Programmable Logic Controller (PLC) with Human Machine Interface (HMI)
- Independent time duration control of each sparge port (programmable from 1 to 120 minutes)
- User configurable valve sparge sequence ordering
- 10, 20, 30 or 40 sparge port manifolds available
- Lag time between sparge cycles (programmable from 1 to 480 minutes)
- Suspend mode for planned nonoperational periods
- Delivery flow and pressure displayed and logged via PLC, viewable from HMI
- Automated maintenance notifications
- Individual sparge port and total system cycle time recorder (password protected)
- Sparge port manifold includes solenoid valves, 1/2" Kynar® compression fittings and analog pressure transmitter
- Oxygen generator pressure gauges and flow meters
- Built-in high flow cooling fans and exhaust vents
- Full one-year warranty includes materials and workmanship
- Service contracts and start-up assistance available
- Distinctive built-in safety features:
  - High pressure alarm/shutdown
  - Built-in thermal protection, high/low temperature alarms
  - Sensor failure alarm
- Remote monitoring package (optional)
- Start-up Service Kit included

# Oxygen Sparge Systems

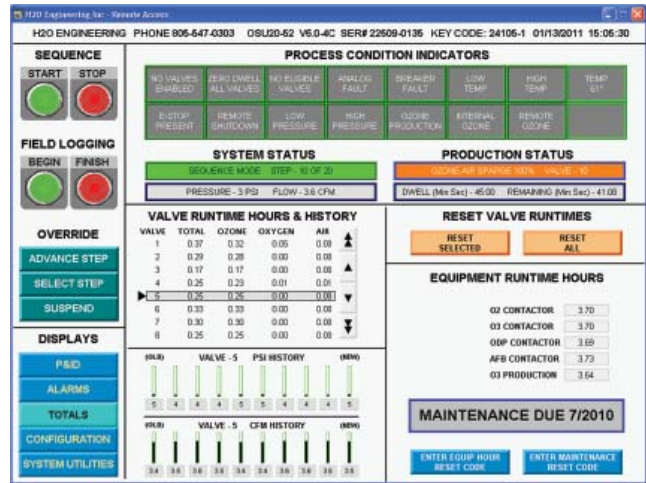
Product #	Sparge Ports	Oxygen Generator Output (% Purity)	Enclosure	Electrical Requirement <sup>1</sup> (VAC)	Power Consumption <sup>2</sup> (kW)	Max Operating Flow <sup>3</sup> (CFM)	Max Operating Pressure <sup>4</sup> (PSI)
O2SU10-190	10	90	Cabinet	120	1.8	1.0	50
O2SU20-190	20	90	Cabinet	120	1.8	1.0	50
MO2SU10-190	10	90	Trailer	120	1.8	1.0	50
MO2SU20-190	20	90	Trailer	120	2.8	1.0	50
MO2SU10-290	10	90	Trailer	240	3.0	2.0	50
MO2SU20-290	20	90	Trailer	240	3.0	2.0	50

**Notes:**

1. Electrical requirement: 60 Hz, Single Phase; All 240 VAC systems require a true neutral.
2. Air conditioning unit in mobile products consumes 1.69 kW during operation.
3. Operating flow is adjustable from 0.6 CFM to stated maximum.
4. Maximum well breakthrough pressure = 100 PSI.



**MO2SU10-290**



**TELEMETRY SOFTWARE PACKAGE (OPTIONAL)**

